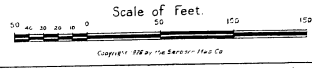
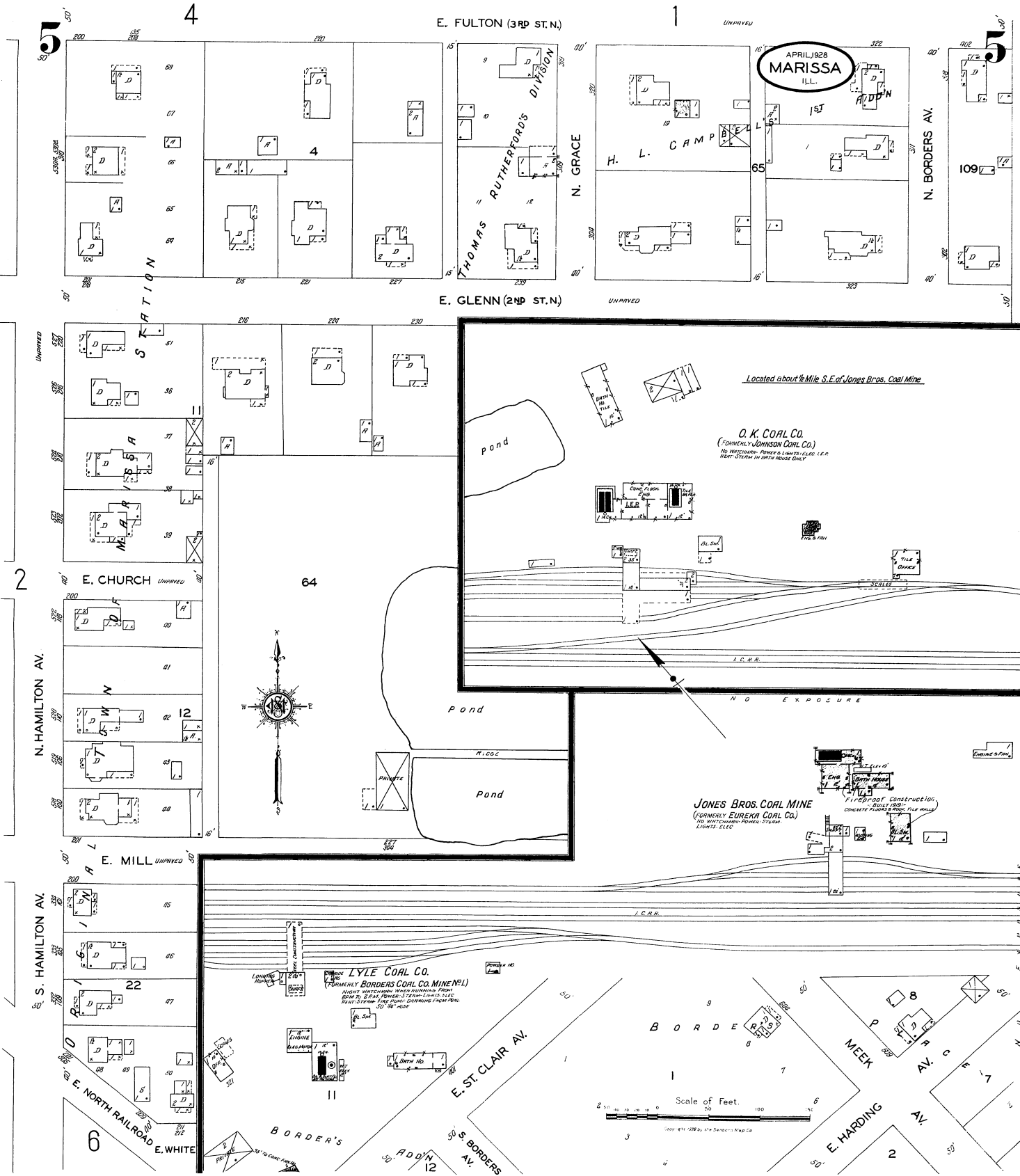


APRIL 9 1928
MARISSA
ILL.





E. FULTON (3RD ST. N.)

E. GLENN (2ND ST. N.)

E. CHURCH

E. MILL

LYLE COAL CO.
(FORMERLY BORDERS COAL CO. MINE #1)

E. ST. CLAIR AV.

E. NORTH RAILROAD

E. WHITE

UNIMPROVED

UNIMPROVED

UNIMPROVED

UNIMPROVED

Located about 1/4 Mile S.E. of Jones Bros. Coal Mine

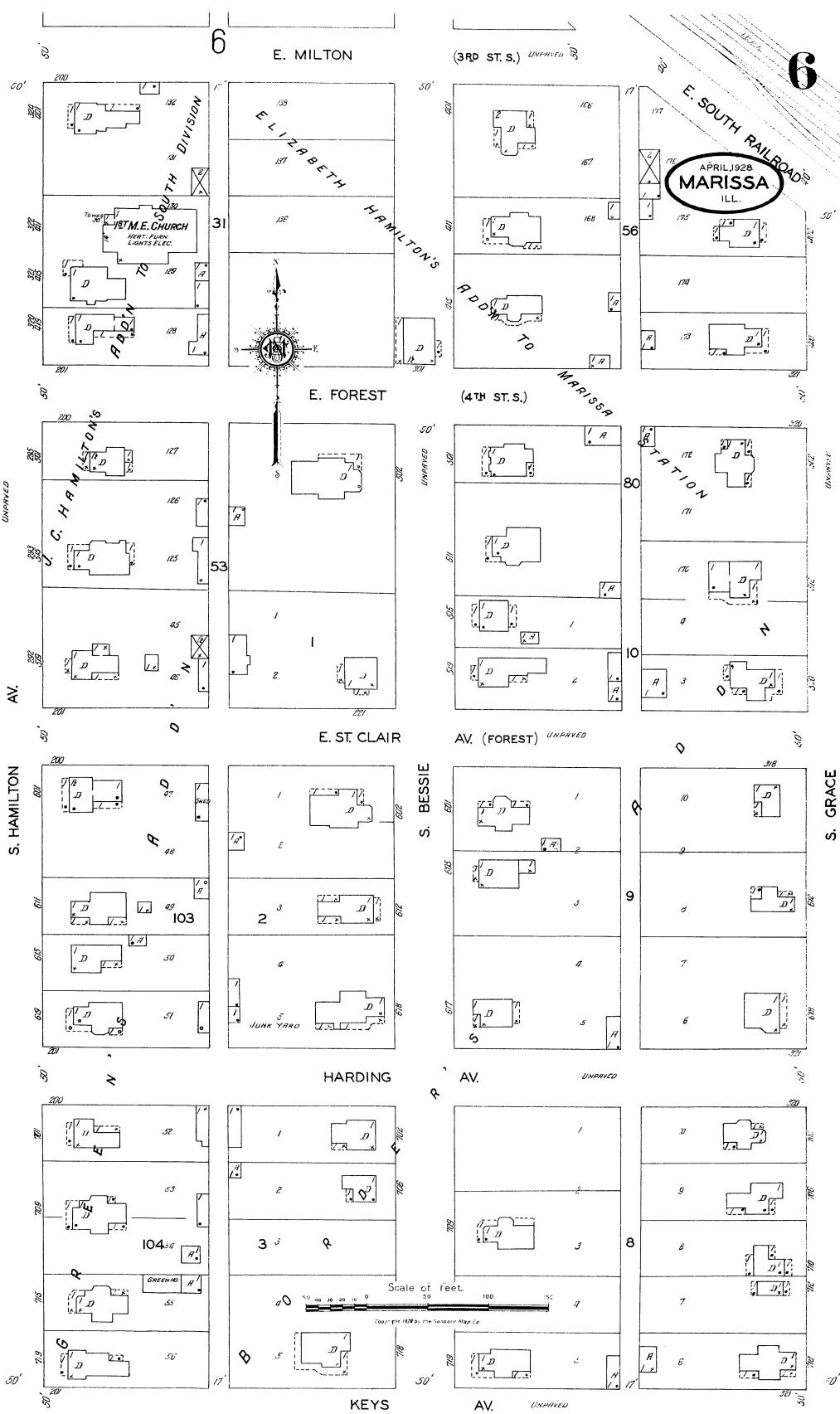
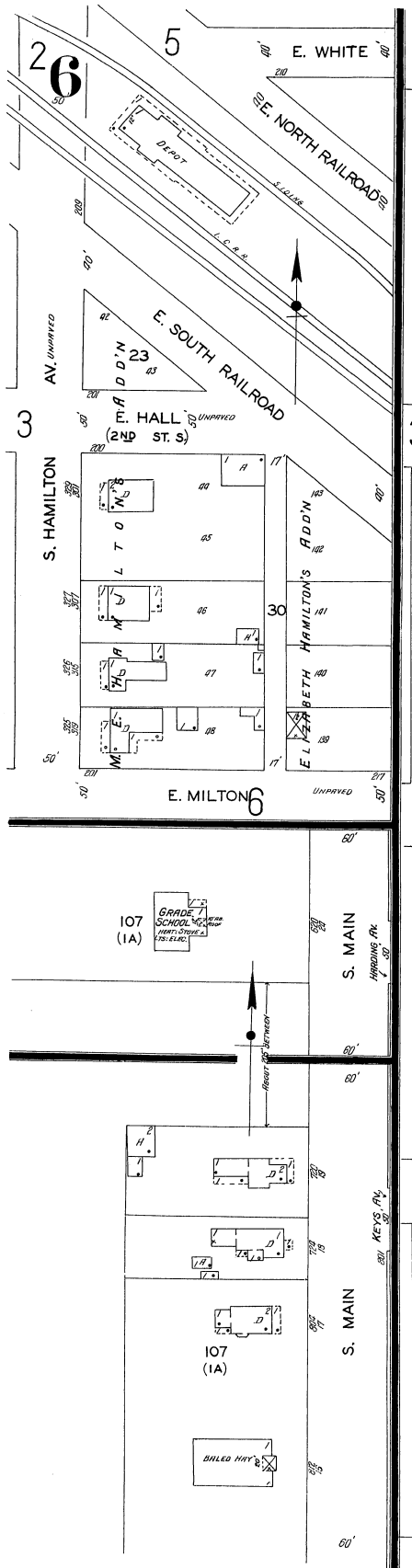
O. K. COAL CO.
(FORMERLY JOHNSON COAL CO.)
NO WINDMILL - POWER LINE - I.C.R.R.
VENT - STEAM IN BATH HOUSE DAILY

JONES BROS. COAL MINE
(FORMERLY EUREKA COAL CO.)
NO WINDMILL - POWER STEAM
LIGHTS - ELEC

APRIL 1928
MARISSA
ILL.

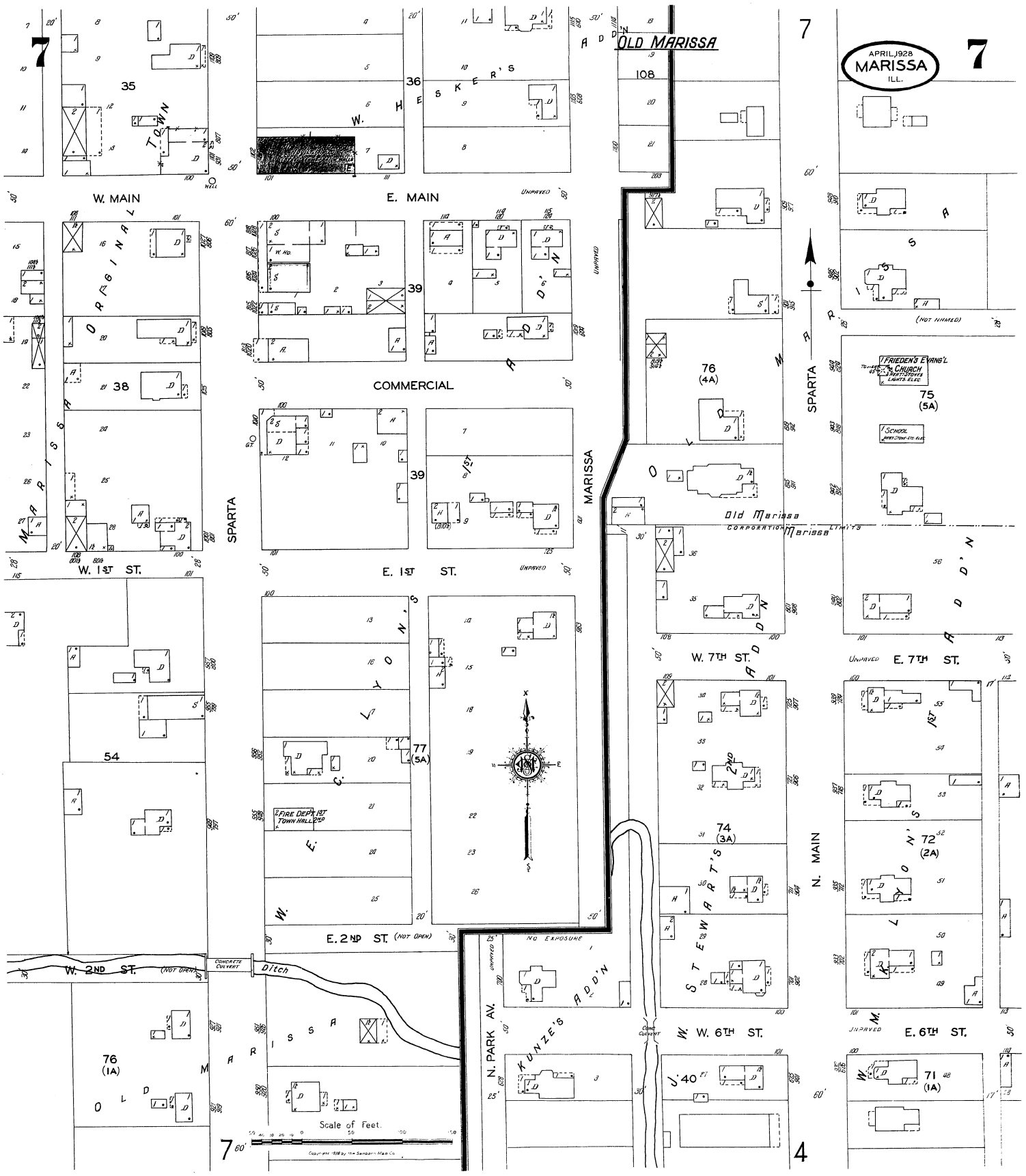
Scale of Feet.

Copyright 1928 by E. S. Sanders & Map Co.



APRIL 1928
MARISSA
ILL.

7



7

4

Scale of Feet.



Copyright 1928 by The Standard Map Co.