

W. FULTON (3RD ST. N.)

E. FULTON

W. GLENN (2ND ST. N.)

E. GLENN

W. CHURCH

E. CHURCH

W. MILL

E. MILL

W. WHITE 3

E. WHITE S(W)

APRIL 1928  
MARISSA  
ILL.

N. EUCLID AV.

N. EUCLID AV.

S. EUCLID AV.

N. PARK AV.

S. PARK AV.

N. MAIN

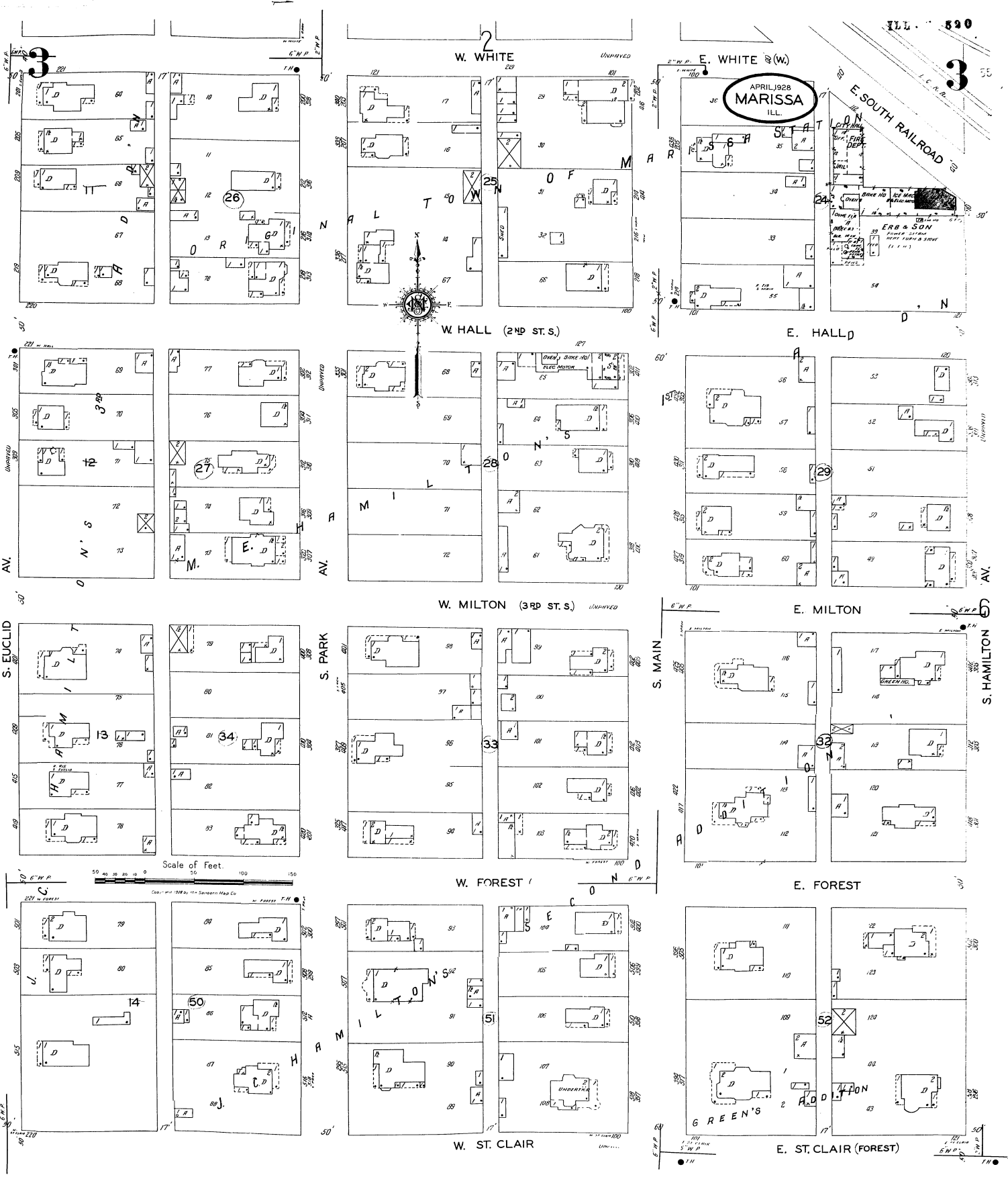
S. MAIN

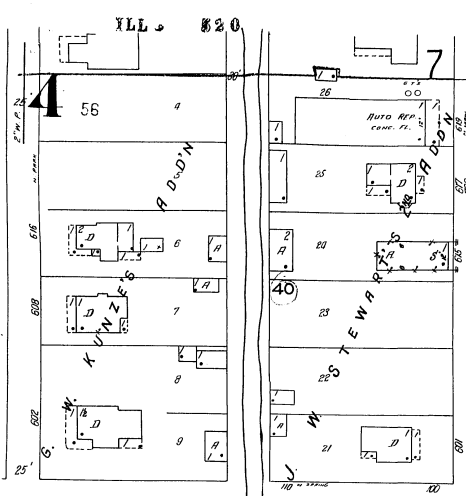
N. HAMILTON AV.

S. HAMILTON AV.

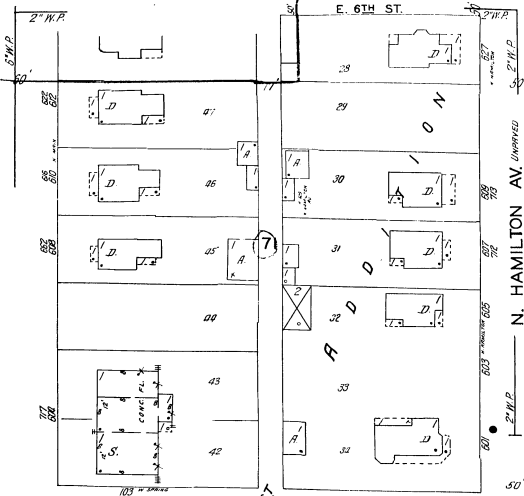
Scale of Feet.

Copyright 1918 by the Sanborn Map Co.

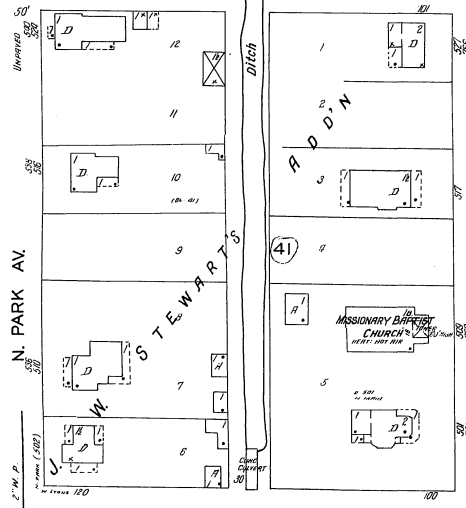
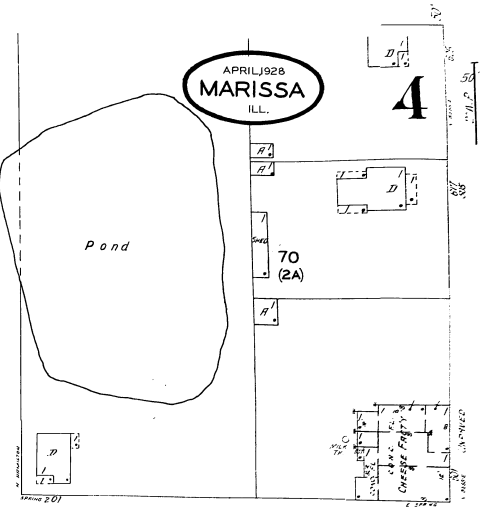




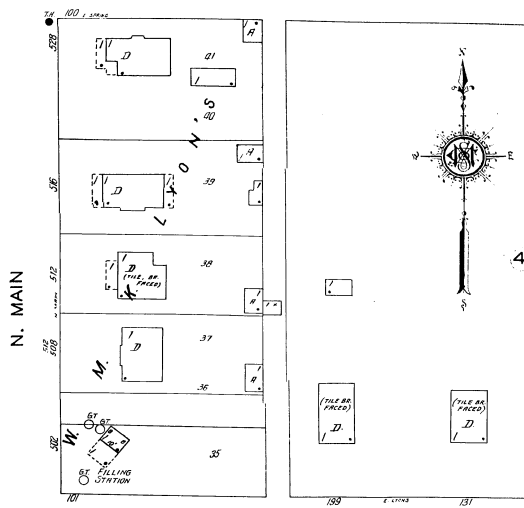
W. SPRING



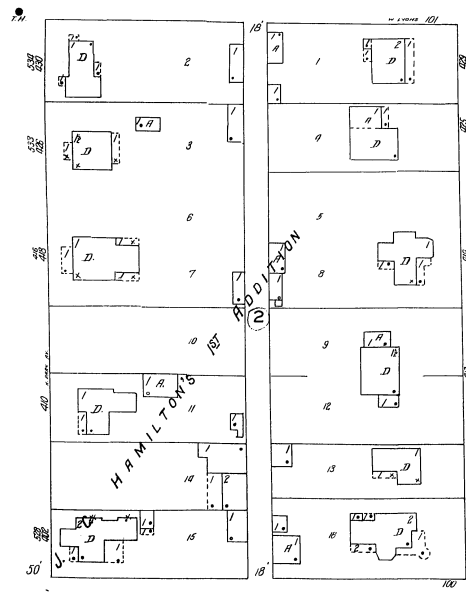
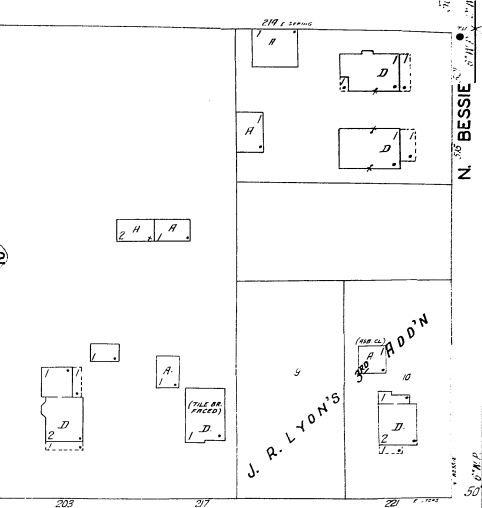
E. SPRING (5TH ST. N.)



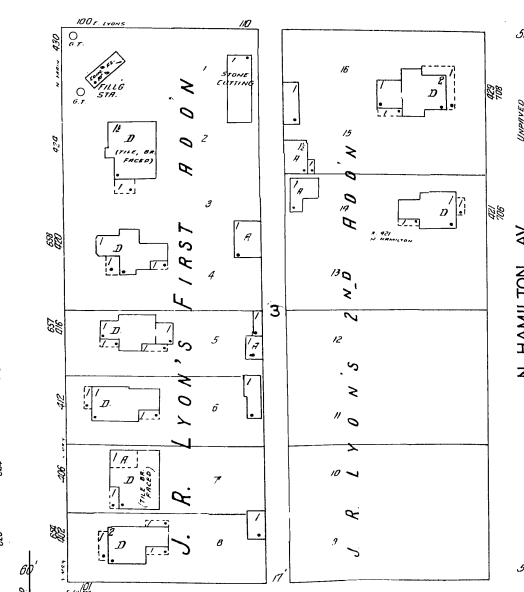
W. LYONS



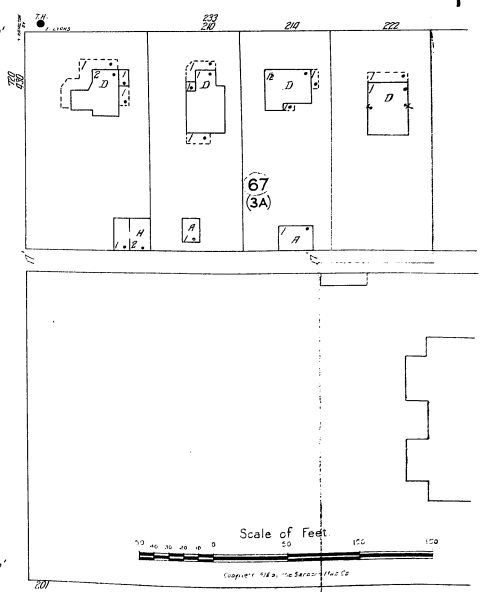
E. LYONS (4TH ST. N.)



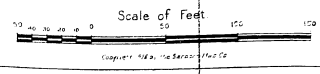
W. FULTON

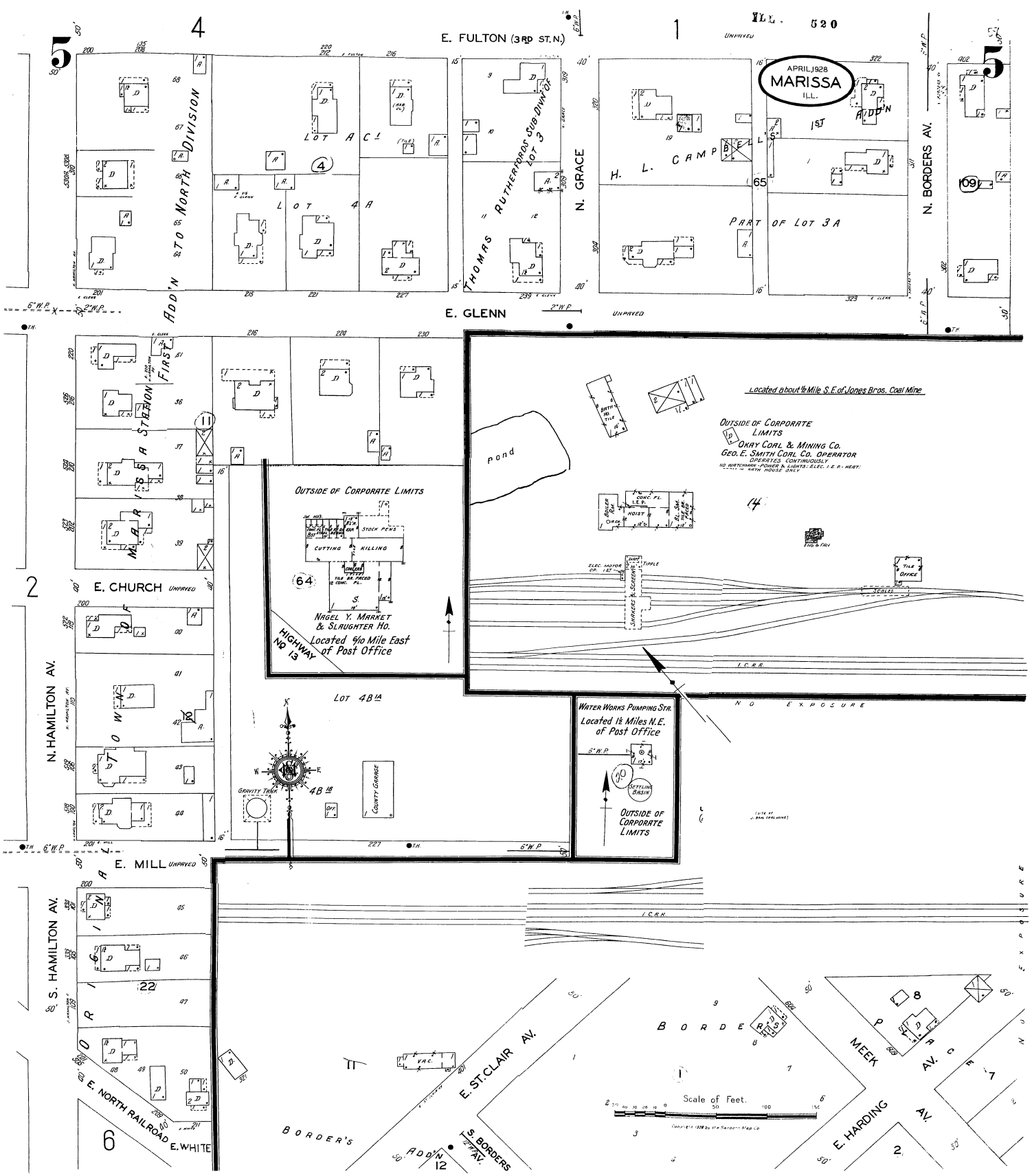


E. FULTON (3RD ST. N.)



5





ILL. 520

E. FULTON (3RD ST.N.)

APRIL 1928  
MARISSA  
ILL.

H. L. CAMP

E. GLENN

Located about 1/2 Mile S.E. of Jones Bros. Coal Mine  
OUTSIDE OF CORPORATE LIMITS  
OHAY COAL & MINING CO.  
GEO. E. SMITH COAL CO. OPERATOR  
OPERATES CONTINUOUSLY  
NO AUTOMATIC POWER & LIGHTS: ELEC. I. E. R. MEAT  
WITH HOUSE ONLY

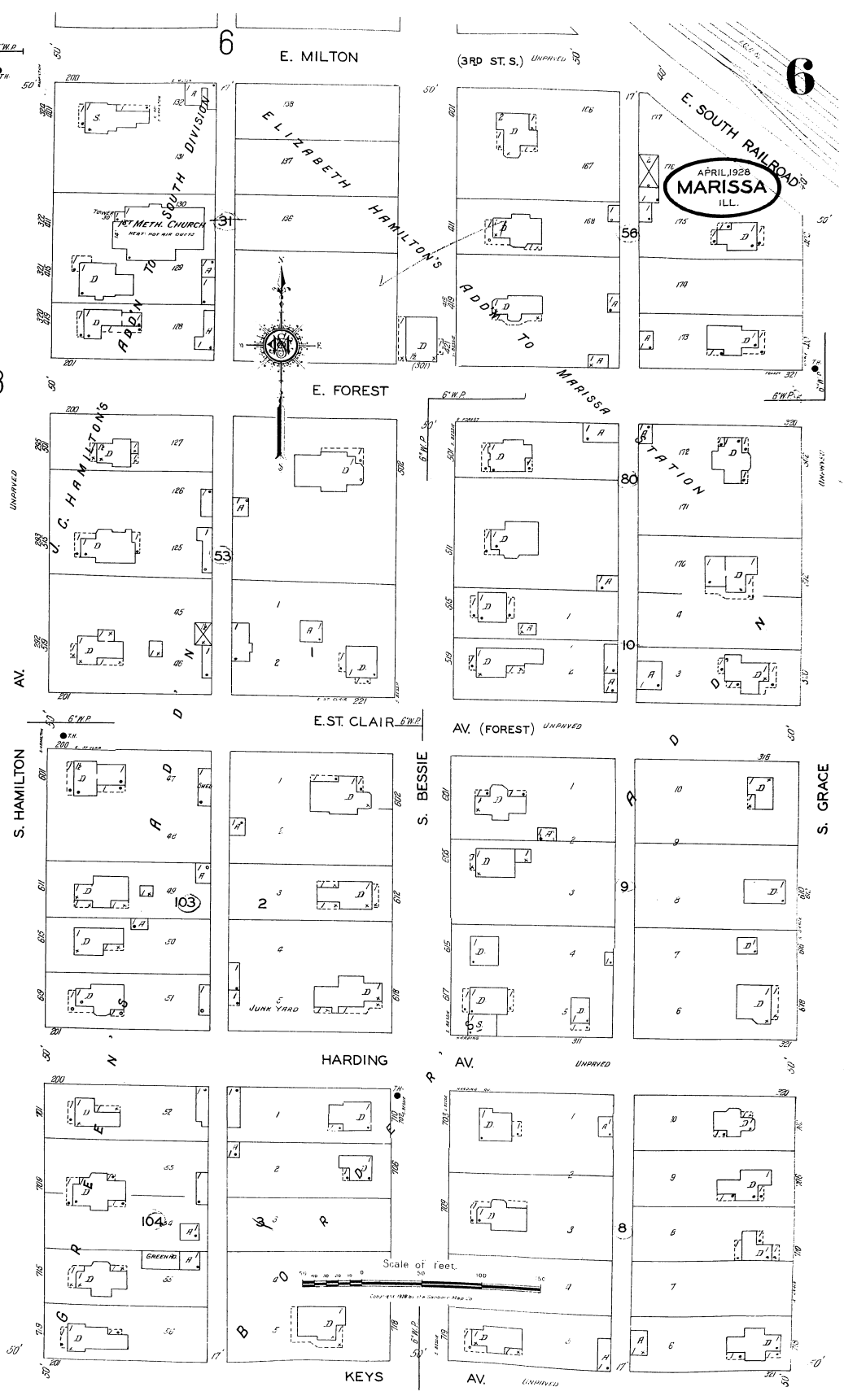
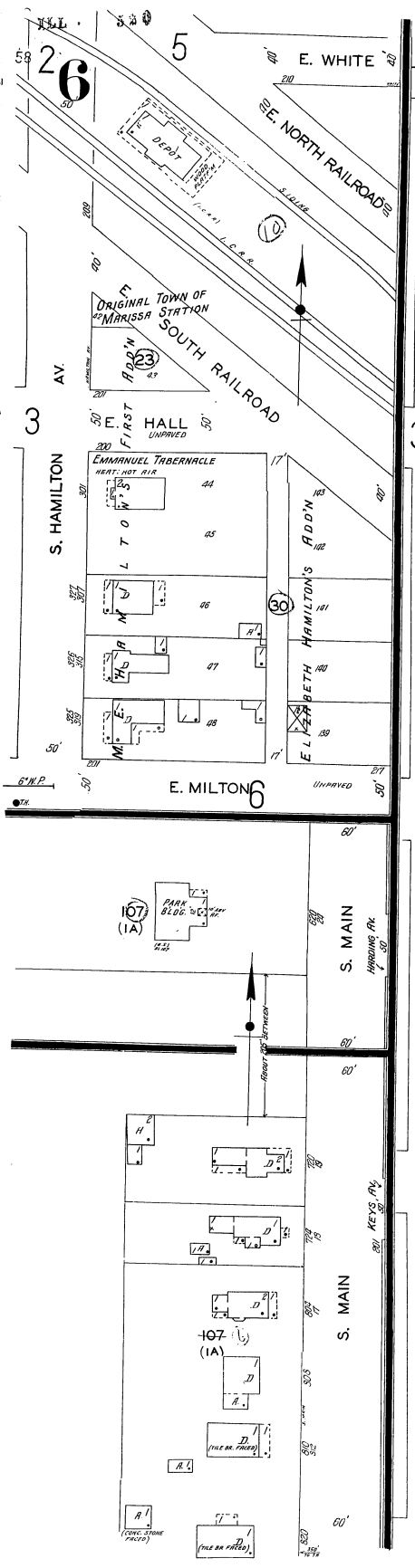
OUTSIDE OF CORPORATE LIMITS  
CUTTING KILLING  
STOCK PENS  
MAGEL Y. MARKET & SLAUGHTER HO.  
Located 3/4 Mile East  
of Post Office  
HIGHWAY No 13

WATER WORKS PUMPING STR.  
Located 1 1/2 Miles N.E.  
of Post Office

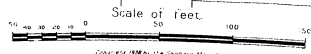
OUTSIDE OF CORPORATE LIMITS

Scale of Feet.

Copyright 1928 by The Standard Map Co.



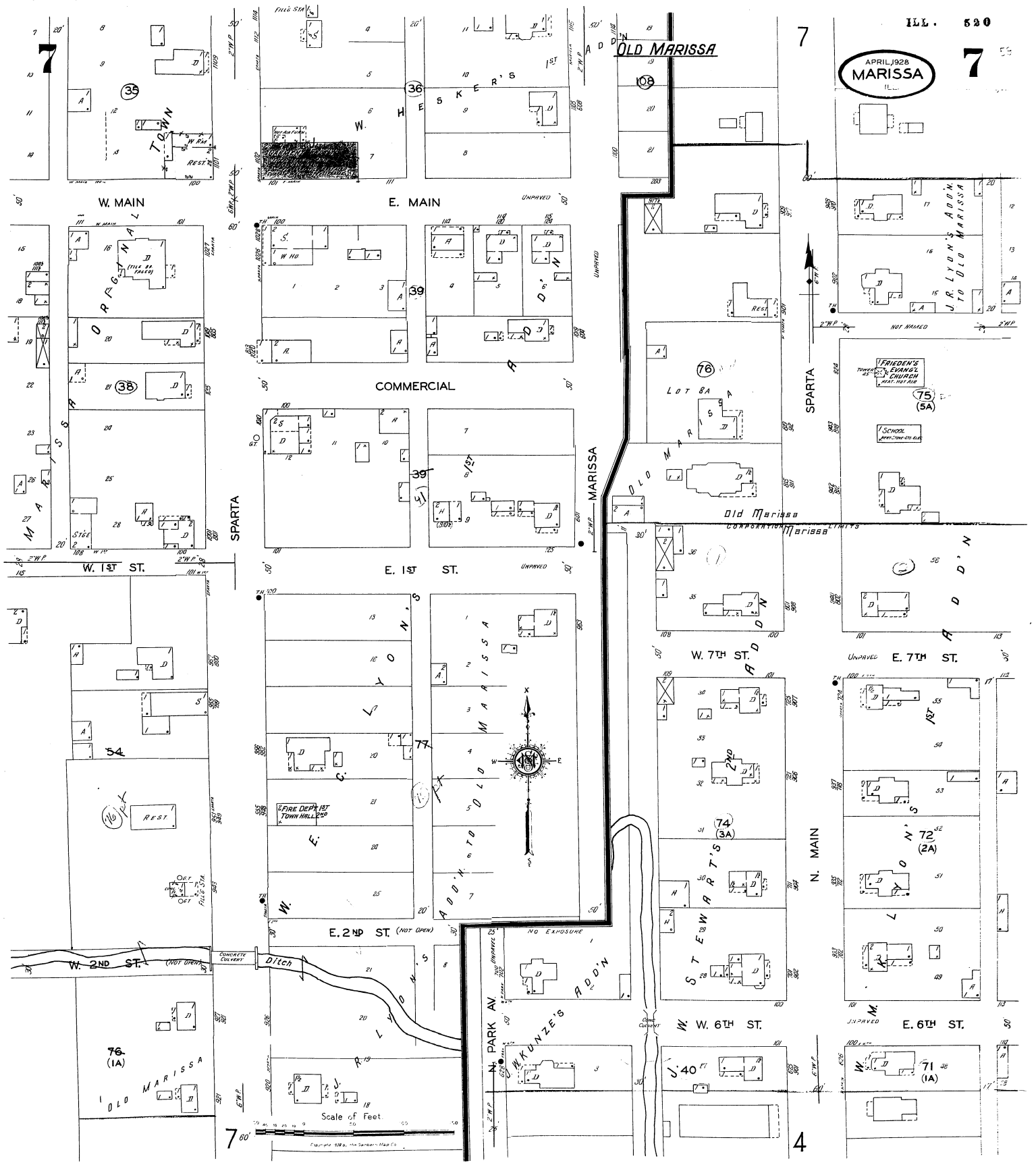
APRIL 1928  
**MARISSA**  
 ILL.



COPYRIGHT 1928 BY THE CHICAGO MAP CO.

APRIL 1928  
MARISSA  
ILL.

7



Scale of Feet

Copyright 1928, by Standard Map Co.