



Includes OLD MARISSA
Population 300

CORRECTION RECORD

REV.	DATE OF CORRECTION	ATTACHED BY	DATE ATTACHED
1	3-25	M. C.	4-19-24

KEY

- 1. Streets
- 2. Lots
- 3. Railroads
- 4. Water
- 5. Marsh
- 6. Cultivated
- 7. Wood
- 8. Swamps
- 9. Other

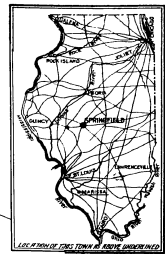


Plate over Original Report.

NEW REPORT, March, 1945

Marissa, Ill.

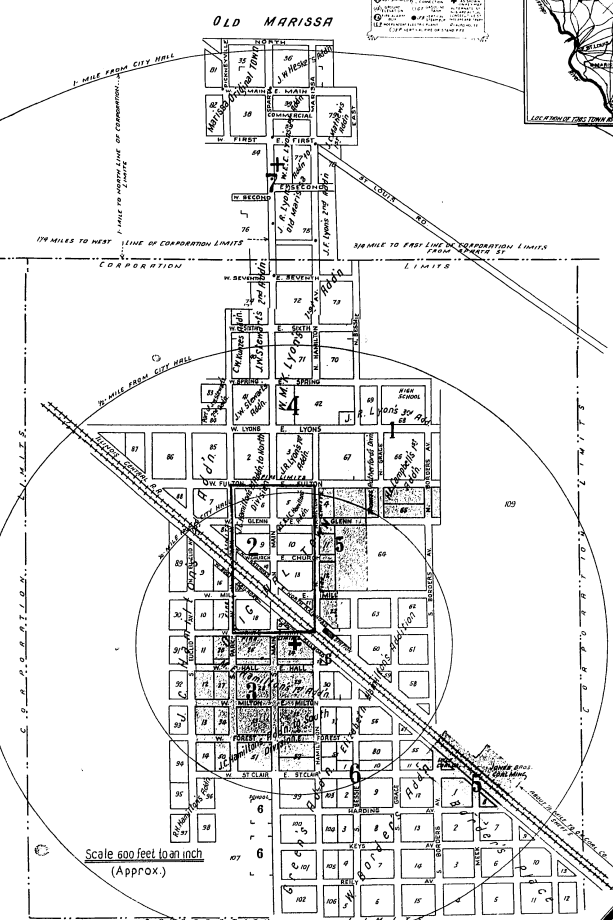
WATER FACILITIES

1. Municipal reservoir. 2. Spring Lake, located 1/2 mile southeast of city hall, capacity 20,000 gallons. Gravity and direct pressure.

FIRE DEPARTMENT

1. 10 ft. x 10 ft. water tank, 10 min., 1 station.

2. Hand pump truck, capacity 200 gallons per minute, 1,000 ft. hose. 3. Fire chemical truck, capacity 40 gallons, 200 chemical hose.



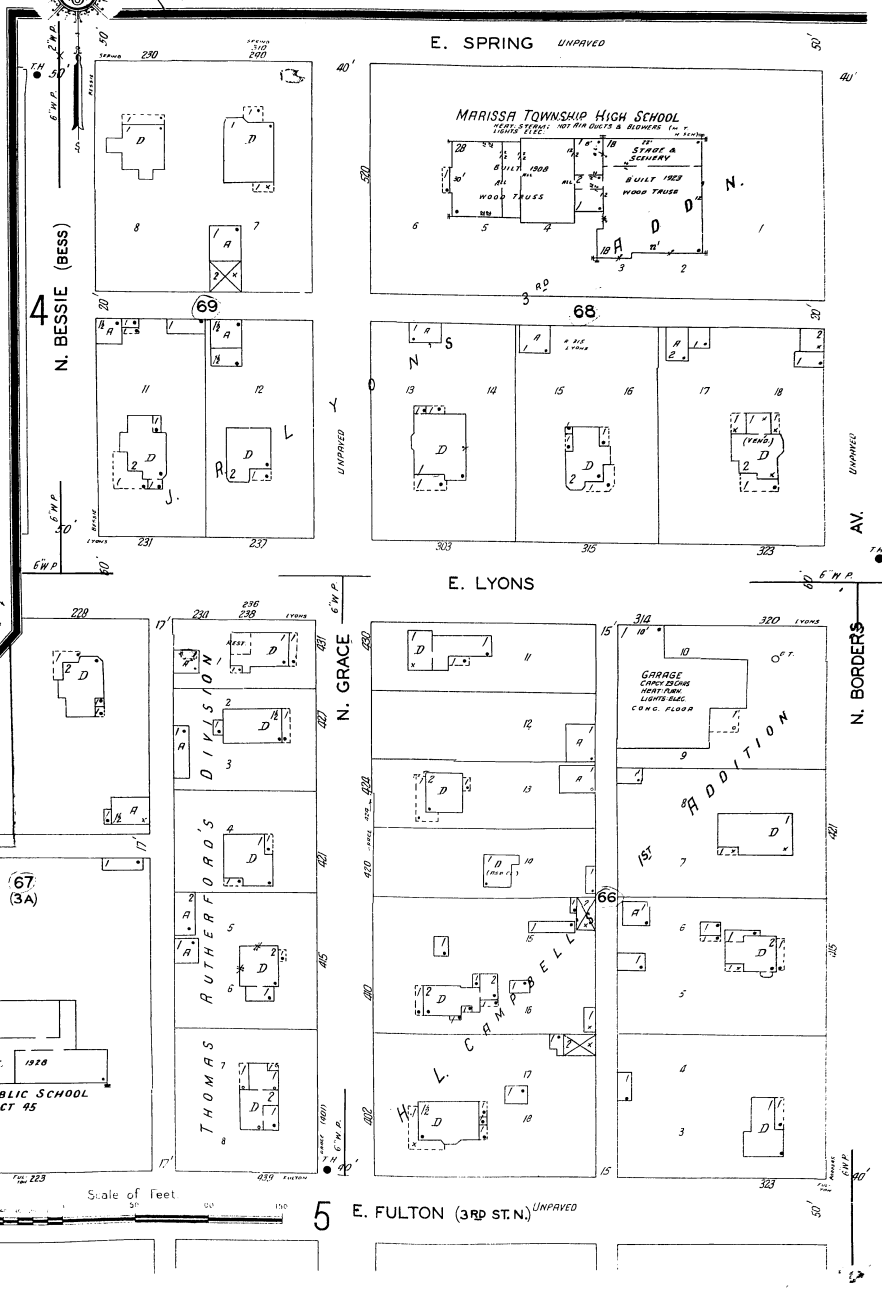
Scale 600 feet to an inch (Approx.)

INDEX

STREETS			
B	Sheet	L	Sheet
Bessie, N.	500-524	+1	
Borders Ave., N.	400-710	0	6
Church, E.	190-211	+1	5
Commercial	190-135		
Eastfield Ave., N.	100-929	+2	
First, E.	190-325	+1	7
Forest, E.	190-116	+1	5
Fulton, E.	100-230	+2	
Glenn, E.	190-110	+1	5
Hall, E.	190-121	+3	
Hamilton Ave., N.	100-231	+1	5
Harrison, E.	100-242	+2	
Highland, E.	100-243	+2	
Lyons, E.	100-222	+1	5
Marion, E.	100-223	+1	5
Marion, W.	100-165	+5	
Milton, E.	100-191	+1	5
North Bedford, E.	100-127	+1	5
Park Ave., N.	100-319	+2	
St. Clair Ave., E.	100-121	+3	
Seventh, E.	100-115	+1	5
Sixth, E.	100-116	+1	5
South Bedford, E.	100-117	+1	5
Spring, E.	100-222	+1	5
White, James F., Lumber Co.	100-125	+4	
White, R.	100-112	+3	
White, W.	100-211	+5	

SPECIALS

Sheet	Part
69	Fire Department
69	First E. E. Church
69	First Methodist Church
69	Grade School
69	L. G. B. R. Depot
69	John Trussell Coal Mine
69	Lytic Coal Co.
69	Marion Cemetery
69	Marion Farmers Cooperative
69	Marion Township High School
69	Missionary Baptist Church
69	Nash, L. W., Minister House
69	O. K. Coal Co.
69	Post Office
69	Telephone Exchange
69	Trust Bank
69	United Presbyterian Church



Scale of Feet

Includes OLD MARISSA
Population 300